

WELTPLAST

Эффективность света:

103 Lumen/Watt

Качество света:

CRI: 72,7

Цветовая температура:

6100 K

Поток: 1763 lm

Интенс.: 722 cd

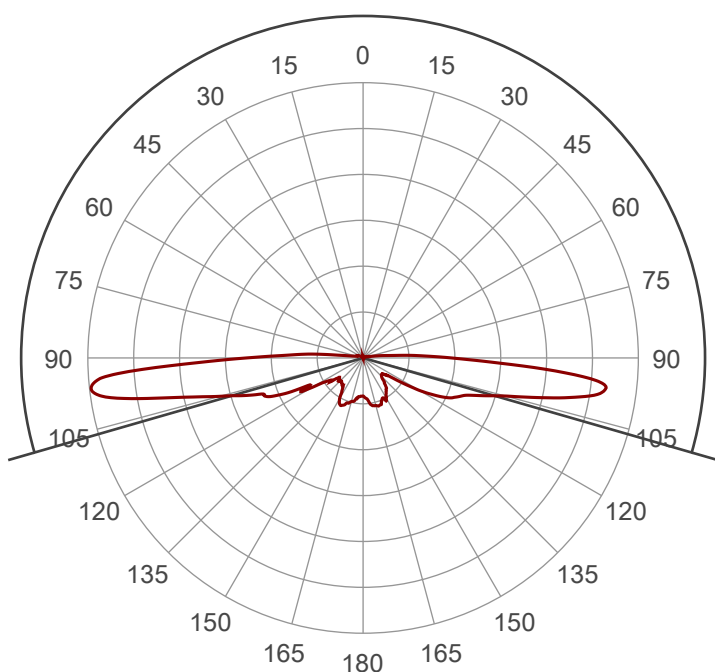
Мощн.: 17,1 W

10,8V @ 1,59A



Угол пучка

212,1°



Название продукта:

ALLC-3W6-12x360

Дата и время:

07.04.2017 13:56:48

Дополнительная информация:

Измерения оптической системы при токе на светодиод 1.7A с встроенным стабилизатором тока

Цвет

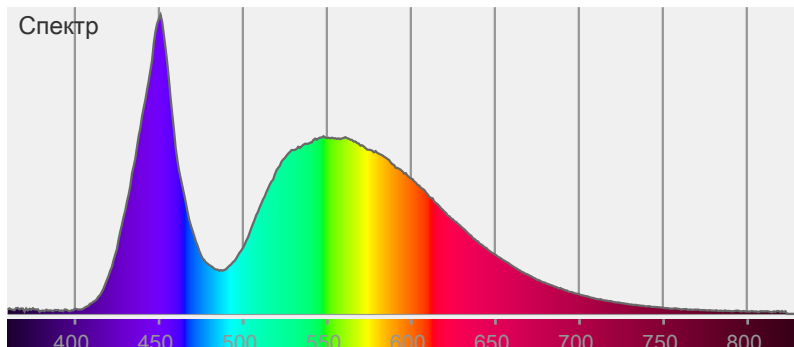


CIE1931

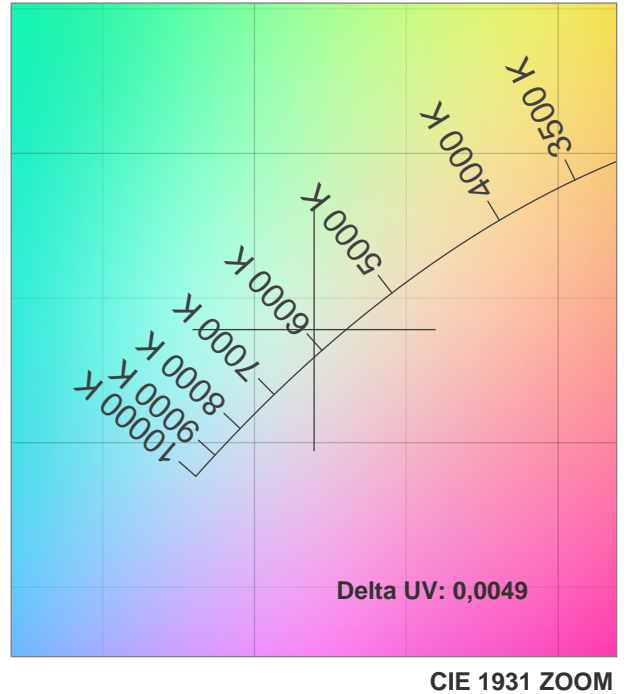
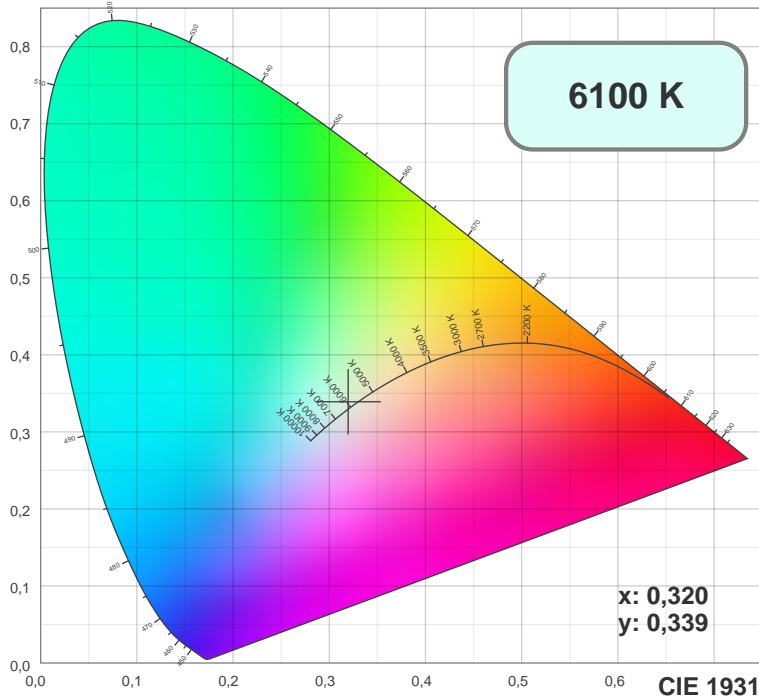
x: 0,320

y: 0,339

Спектр

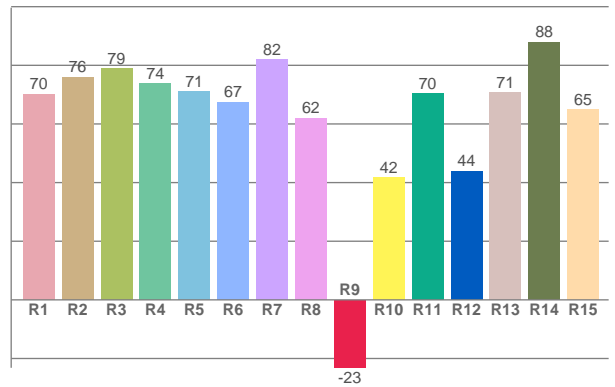
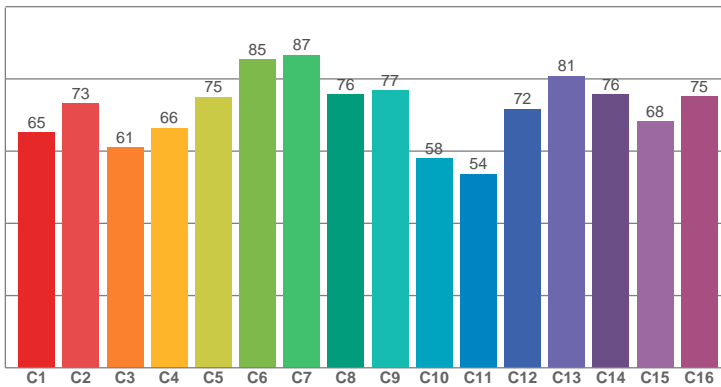


WELTPLAST



TM30: 71,3

CRI: 72,7 (R1-R8)



CRI R values, only R1-R8 are used to calculate final CRI value

R1	R2	R3	R4	R5	R6	R7	R8	R9	R10	R11	R12	R13	R14	R15
70,26	76,06	78,80	73,83	71,15	67,48	82,08	62,01	-23,17	41,82	70,41	43,96	70,84	87,94	64,81

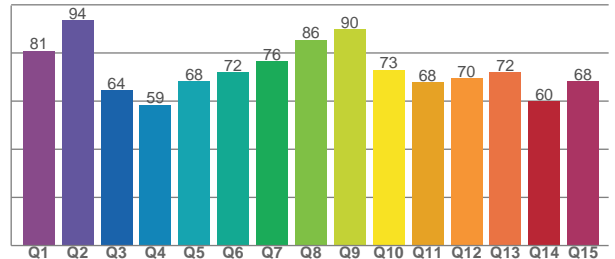
TM30 C values, 16 binned values out of total of 99 C values

C1	C2	C3	C4	C5	C6	C7	C8	C9	C10	C11	C12	C13	C14	C15	C16
65,27	73,18	61,04	66,40	75,01	85,45	86,66	75,68	76,88	57,88	53,67	71,66	80,82	75,71	68,21	75,19

CQS Q values

Q1	Q2	Q3	Q4	Q5	Q6	Q7	Q8	Q9	Q10	Q11	Q12	Q13	Q14	Q15
80,99	93,68	64,44	58,51	68,40	71,96	76,50	85,53	89,77	73,09	67,87	69,64	72,18	59,93	68,39

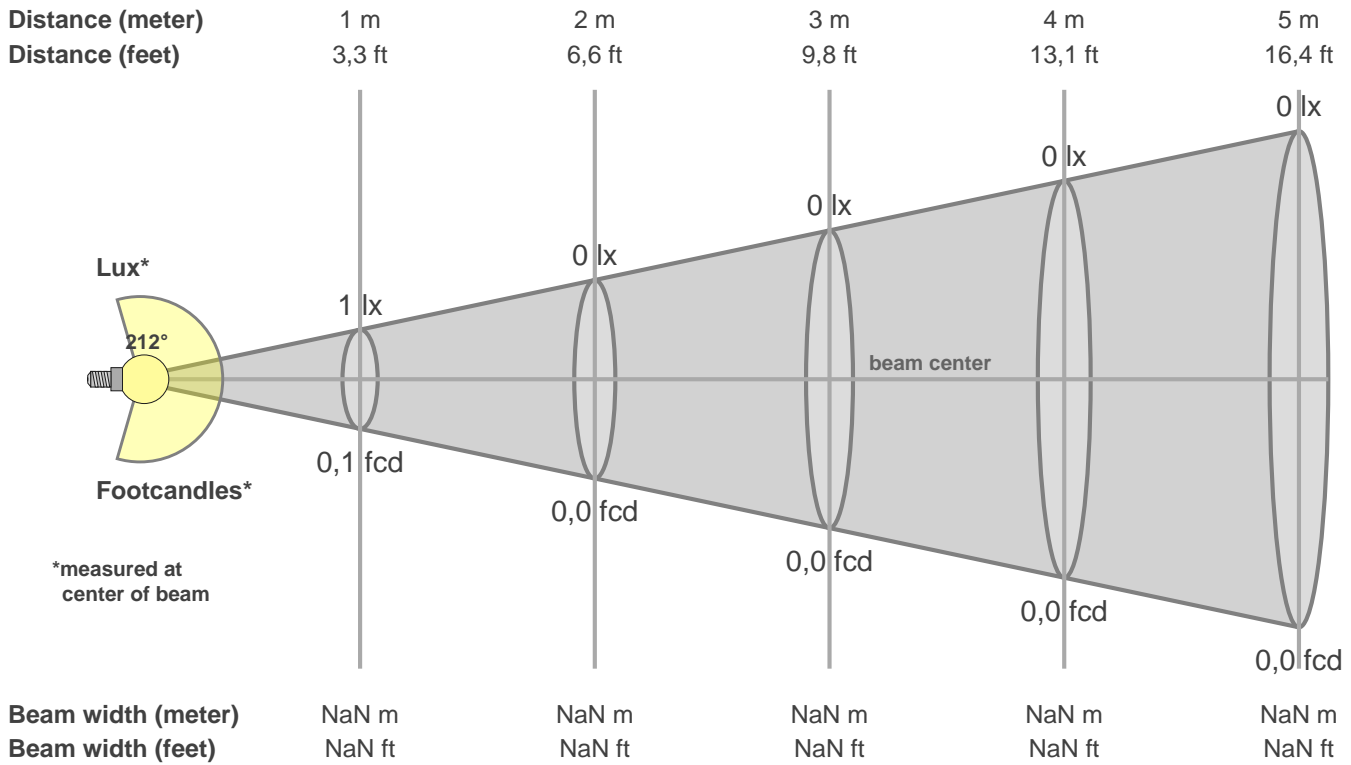
CQS: 71,6



Color parameters

CCT	CRI	CRI R9	TM30 Rf	TM30 Rg	CQS	x	y	u	v	Duv
6100 K	72,7	-23,2	71,3	93,9	71,6	0,3	0,3	0,2	0,3	0,0017

WELTPLAST



Intensities in 0° c-plane

0°	9°	18°	27°	36°	45°	54°	63°	72°	81°	90°	99°	108°	117°	126°	135°	144°	153°	162°	171°
1	1	2	5	4	3	6	14	17	35	309	672	320	158	105	85	89	136	126	107
100%	100%	121%	345%	306%	250%	470%	1036%	1268%	2604%	23210%	50467%	24003%	11904%	7892%	6349%	6718%	10253%	9438%	8058%

Intensities in 0° c-plane

0°	9°	18°	27°	36°	45°	54°	63°	72°	81°	90°	99°	108°	117°	126°	135°	144°	153°	162°	171°
1	1	2	5	4	3	6	14	17	35	309	672	320	158	105	85	89	136	126	107
100%	100%	121%	345%	306%	250%	470%	1036%	1268%	2604%	23210%	50467%	24003%	11904%	7892%	6349%	6718%	10253%	9438%	8058%

Intensities in 180° c-plane

0°	9°	18°	27°	36°	45°	54°	63°	72°	81°	90°	99°	108°	117°	126°	135°	144°	153°	162°	171°
1	1	2	2	3	5	6	6	10	34	234	622	321	221	80	69	103	120	133	124
100%	105%	135%	187%	221%	350%	414%	474%	760%	2527%	17553%	46720%	24140%	16591%	5975%	5190%	7741%	8978%	10017%	9292%

Intensities in 180° c-plane

0°	9°	18°	27°	36°	45°	54°	63°	72°	81°	90°	99°	108°	117°	126°	135°	144°	153°	162°	171°
1	1	2	2	3	5	6	6	10	34	234	622	321	221	80	69	103	120	133	124
100%	105%	135%	187%	221%	350%	414%	474%	760%	2527%	17553%	46720%	24140%	16591%	5975%	5190%	7741%	8978%	10017%	9292%

Beam angle 50%	Field angle 10%	Cutoff angle 2,5%	Intensity ratio in 120° cone	Intensity ratio in 90° cone
212,1°	360,0°	360,0°	0,8%	0,3%